

Mr Phillip Wan


HOD Student Management



Jurong Secondary School

忠 · 勤 · 诚 · 爱

Loyalty · Industry · Sincerity · Love



**STUDENT
MANAGEMENT**

Student Management @ JSS

Discipline is necessary to build a **safe and conducive** environment **for all**.

It is an **educative** and **student centric** process, and is possible only when there is **consistency** across the school (**with all**).

Our beliefs ...

The school:

- To build the school tone
 - Ensure a safe and conducive environment for all

The student:

- To educate
 - Self-Discipline, Good Character, Action Consequences
- To be student centric
 - What else is needed to help the child
 - Student's needs and circumstances

Discipline @ JSS

- **Educative**
 - Discipline is a learning process
 - Teach students how to develop self-discipline and good character
 - Help students understand that their actions carry consequences, and to take responsibility for their actions

Discipline @ JSS

- Student Centric
 - Putting the student in the center
 - What else, do we need to help the student learn
 - What else, do we need – to ensure that there is a positive classroom experience

Discipline @ JSS

- **Consistent**
 - Everyone has beliefs
 - Consistent in approach
 - The Student Management Guidelines

Student Management Guidelines



STUDENT MANAGEMENT GUIDELINES

The following school rules must be observed by all students in the classrooms, within the school grounds, during all school activities and while travelling to and from school. The school reserves the right to review and make amendments to the school rules to ensure that the entire student population is fairly treated.

1) CITIZENSHIP AND SCHOOL IDENTITY

- 1.1 Students will stand at attention throughout the flag raising ceremony.
- 1.2 Students who are Singapore citizens must sing the National Anthem and recite the pledge.
- 1.3 Students who are Singapore citizens will take the pledge with the right fist placed over their heart.
- 1.4 Students must sing the school song respectfully.

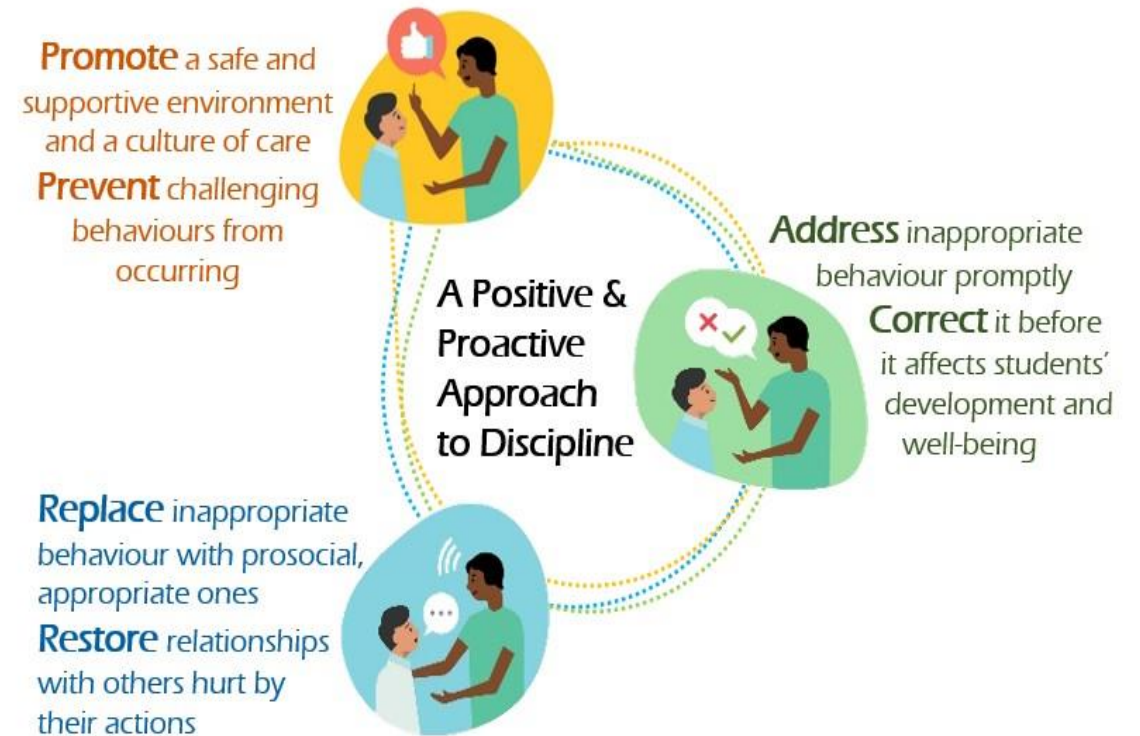
2) SCHOOL ATTIRE

- 2.1 Students are to wear the prescribed school uniform and there should be no modification made to the uniform.
 - 2.1.1 Long pants must not be tapered (i.e. width of pants must be at least 2 inches wide when pulled from the calf and the end of the pants must cover the ankles).
 - 2.1.2 Length of skirts must touch the kneecap and must not be folded at the waist.
- 2.2 The school crest must be prominently displayed at all times.
- 2.3 The school uniform must be worn during morning flag raising ceremony except on dress-down Wednesdays and Fridays or unless otherwise instructed.
- 2.4 Students should be properly attired in school PE, House or orientation T-shirts and school shorts for PE lessons.
- 2.5 Approved class and CCA T-shirts can be worn only during specific occasions, unless otherwise specified. Guidelines can be found in Annex A.
- 2.6 Students can only change into their PE attire prior to their SEL/PE lesson. They must change out of it immediately after the lesson.
- 2.7 Only female pupils are allowed to wear jewellery, in the form of one pair of identical, plain ear-studs measuring no more than 5mm in diameter, one on each ear lobe. Religious ornaments must be worn discreetly/covered up.
- 2.8 Students are to wear shoes and socks based on the following standards:
 - 2.8.1 White-based low-cut shoes which are in 70% white. The remaining 30% must not be in loud or flashy colours
 - 2.8.2 Contains only 1 shoe logo
 - 2.8.3 White shoe laces
 - 2.8.4 Plain white socks without logo visibly worn
- 2.9 For all official school events and functions, students are to report in full school uniform unless otherwise instructed.

E-Student Handbook @
JSS Website

Our Approach

- **Promote and Prevent**
- **Address and Correct**
- **Replace and Restore**



Our Approach

Build partnership with stakeholders to develop every child holistically

Sec One Concern

- 1. Management of Mobile Device**
- 2. CCA is compulsory**
- 3. Play that causes discomfort**

Our Team

Role	Teacher
HOD / Student Management SH / Student Management	Mr Philip Wan Ms Zawani
Lower Sec	Mr Riduwan Ms Lau Kai Ting <hr/> Mr Ler Jun Yi Ms Sarah Lee
Upper Sec	Mr Tony Neo Ms Daliah

CONDUCT GRADE

- Definition
 - A student's Conduct Grade is determined by his/her:
 - disciplinary record,
 - punctuality,
 - school attendance,
 - CCA attendance
 - level of fulfilment of student expectations.